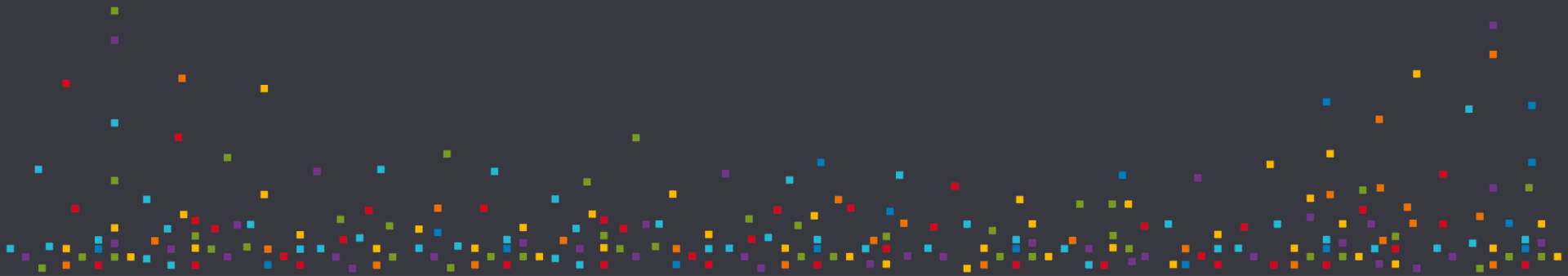




UNIVERSITY OF OSTRAVA  
FACULTY OF SOCIAL STUDIES

THE BEST

Good place for studying



# University of Ostrava

- a public research university (founded in 1991) educating nearly 9,000 students in **six faculties**

Faculty of Social Studies 

Faculty of Fine Arts 

Faculty of Arts 

Faculty of Medicine 

Pedagogical Faculty 

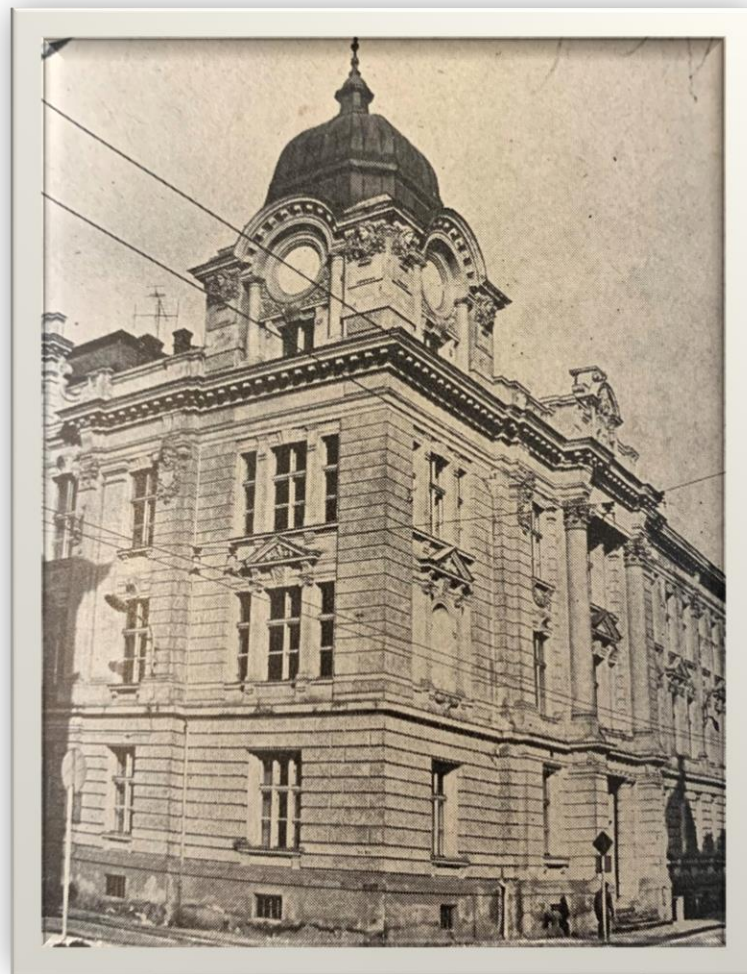
Faculty of Science 



# Faculty of Social Studies



Building was open at  
1901 as grammar  
school for boys





# Faculty of Social Studies

- Faculty was founded on **April 1st in 2008.**
- First academic year beginning on **September 1st in 2008.**



# Faculty team



# Faculty consists of two Departments

- *Department of Social Work*
  - *Department of Health and Social Studies*
  - *The European Research Institute  
for Social Work*
- + Project Support Centre



# The European Research Institute for Social Work (ERIS)

- participation in university science institution
- cooperation based on agreements between European universities from *Finland, France, Germany, United Kingdom, Slovakia, Poland, Austria* and other associated member universities across Europe
- Aims:
  - **research activities**
  - **publication activities** (ERIS Monographs, Social Work - Czech And Slovak Social Work )





# Team of ERIS



# Courses in English – winter semester

- Introduction to study Czech Social Work
- International Project Management
- Professional Practice Learning – winter
- Sociology
- Individual Social Work
- Development of theoretical Concepts of Social Work
- Smart Technologies in Social Work
- Social Work in International Practice
- <https://www.osu.eu/22821/courses/?filtr=a&title=&isced=&fac0=a&lan0=a&sem0=a>

# Courses in English – summer semester

- Introduction to Study Czech Social Work
- Community Social Work
- Social Work with Family
- Professional Practice Learning – spring
- Conference/Workshop Participation
- Critical Social Work
- Communication
- Social Work Sensitive to Gender, Sexual and Relationship Diversity
- Social Work in International Practice
- Disability Studies
- <https://www.osu.eu/22821/courses/?filtr=a&title=&iscd=&fac0=a&lan0=a&sem1=a>

# International Spring School of Social Work

- Since 2007 the Faculty has organized an annual event for students in Master's and doctoral degree programmes
- The spring school offers an excellent opportunity for students to gain feedback from academics based in a variety of European countries, plus a chance to expand their knowledge, share experiences with their peers from other institutions and countries, and keep in touch with developments throughout Europe.
- The event also functions as a platform for developing a European social work research network.
- <https://eris.osu.eu/spring-school/>





# Zebra

studentský kolektiv FSS OU

- Zebra "adopted" by Faculty of Social Studies.
- Open group of students based at the Faculty of Social Studies of the University of Ostrava.
- Organise multiple events, overcome prejudices and talk about things that are often ignored.
- Anybody can join, especially those endangered species who are interested in current social issues. You won't get bored!



## Professional Practice Learning



# Where to go for practice?

- The practice is carried out in ***state or non-state*** organisations where ***social or health-social work*** is carried out. Professional practice can be carried out both in the ***Czech Republic and abroad.***



# Anywhere

|  |  |
|--|--|
| Emergency care   | Asylums  |
| Support for independent living                               | Facilities for crisis assistance                     |
| Respite services   | Low threshold facility for children and young people |
| Day Service Centres  | Early Care Centre                                    |
| Day care centres   | Intervention Centres                                 |
| Weekly residential centres                                   | Aftercare facilities                                 |
| Homes for people with disabilities                           | Homes with special regime                            |
| Homes for the elderly  | Hospices   |
| Sheltered housing  | Prisons  |
| Social services provided in inpatient health care facilities | Social and legal protection of children etc.         |





# Tandem practice for foreign students

- Practice of a Czech and a foreign student together. For a Czech student, this is a common form of continuous practice. The only difference is that the internship is always paired with a foreign student, to whom she provides support in the field of translation and helps him orientate himself in the system of Czech social work practice.





## Consultants from practice

A group of people with experience of complex life situations who are currently or have previously used social work services. The practice consultants act as co-teachers in the course. They share their life stories with students using the storytelling method.

# International Students Guide

- <https://dokumenty.osu.cz/fss/international-students-guide-fss-ou.pdf>



# Contacts

[osu.eu](https://osu.eu)

[fss.osu.eu](https://fss.osu.eu)

Michaela Vontorová

Erasmus Faculty Coordinator

[Michaela.vontorova@osu.cz](mailto:Michaela.vontorova@osu.cz)